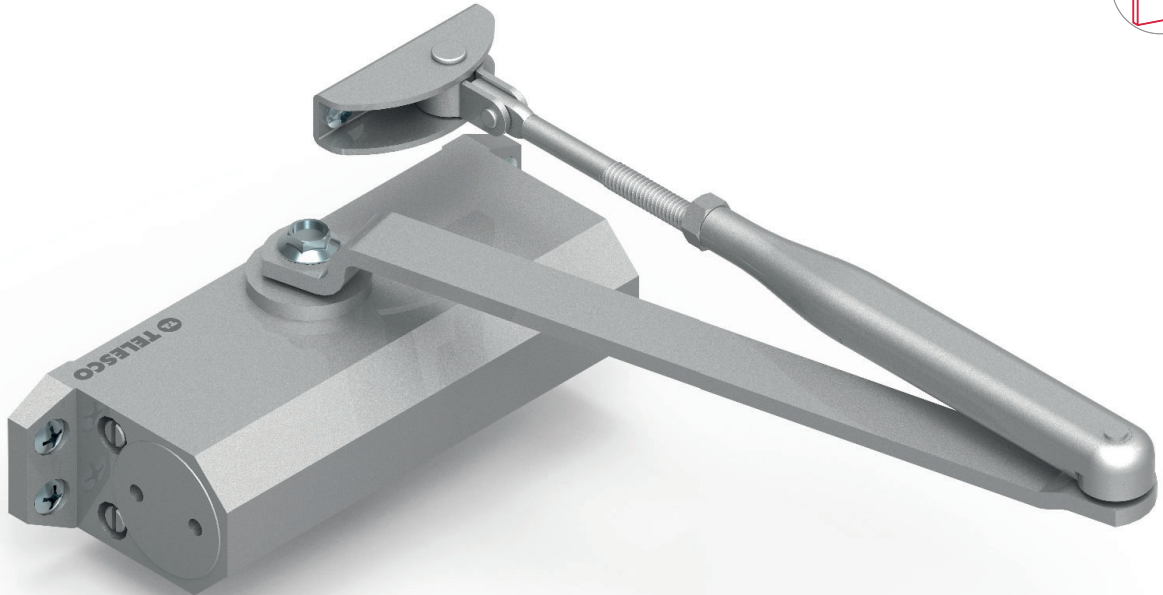


Compact 1000



Technical Specifications

- > Hydraulic door closer with **rack and pinion** mechanism.
- > **High quality components.** Body manufactured with aluminium, arm and internal components manufactured with high quality steel.
- > **Flexi System.** Size 2 - 3 - 4 by installation position.
- > **Closing Speed Control.** Adjustable closing speed by valve in the range from 160° to 15° for size 2/3 and from 145° to 15° for size 4.
- > **Latch Action Control.** Adjustable latch action by valve in the range from 15° to 0°.
- > **Adjustable Hold Open.** Adjustable hold open system to any selected opening angle (optional).
- > **Easy to install.** Adapts to all type of applications and offers great ease of installation.
- > **Range of colors.** Available in five different colors: White (BL), Brown (BR), Black (NE), Gold (OR) and Silver (PL).



2 → 4



≤ 1100 mm
≤ 80 Kg



≈ 1,60 kg



Individual Box

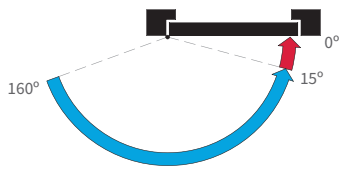


x 10

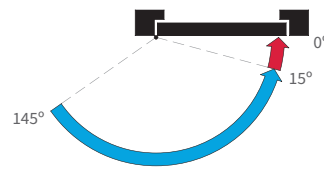


Hydraulic Controls

Size 2/3

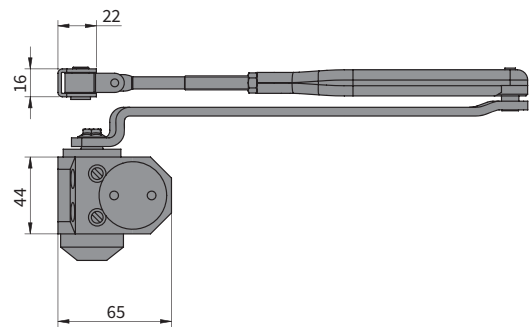
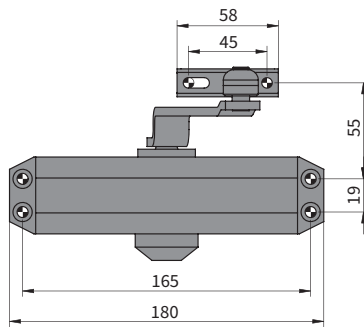


Size 4



█ Latch Action
█ Closing Speed

Dimensions



Technical Overview

Model	Functional Performances				Posición de instalación		
	Adjustable Closing Force	Adjustable Closing Speed	Adjustable Latch Action	Adjustable Hold Open	Door Mount Pull Side	Transom Mount Push Side	Parallel Arm
AS 1159 S	✓	✓	✓		✓	✓	✓
AS 1159 T	✓	✓	✓	✓	✓	✓	

Accessories



Link Arm



Hold Open Link Arm



Parallel Arm Bracket

DOM - MCM S.A.U.

Artapadura, 12
01013 Vitoria-Gasteiz (Álava)

Tel: +34 945 262 055 / +34 943 77 05 02



we domore for security

